

Re-energizing the Network



**Private
Sector Alliance
for Disaster Resilient
Societies**

Inside

Messages

Who We Are

ARISE in 2021

2022 Way Ahead

2021

Annual Report

Hans T. Sy

Chairman of the Executive Committee, SM Prime Holdings, Inc.
Co-Chair, ARISE-Philippines



We survived. We are resilient. We will continue to be so.

Like the rest of the world, ARISE-Philippines experienced two years of a pandemic complicated by lockdowns of different contexts, levels, and guidelines, and by the onset of the Delta and Omicron variants that brought fear amidst hope.

COVID-19 challenged us with unprecedented threat to life and livelihood. While it refuses to loosen its grip, we are not giving up. Vaccines helped restore our hope, and our indomitable spirit as one team endured. Our mission remains firm—creating resilient societies by energizing the private sector collaboration with the public sector and other stakeholders to achieve the outcome and goal of the Sendai Framework in a transparent and inclusive way that delivers local and measurable impact.

With our 2021 Theme of “RE-ENERGIZING THE NETWORK,” we responded to the challenge with a two-pronged strategic approach – transforming our Network and performing our mission and commitments. We prioritized our efforts by identifying three major Work Themes: Disaster Risk Management Strategies; Education and Training; and Urban Risk Reduction and Resilience; and, we focused on our four Priority Areas: Small and Medium Enterprises; Investor and Investments; Insurance and Re-Insurance; and Resilient Infrastructure.

Internally, we conducted the Members Survey; the Members Database Audit; and One-on-One with our Leaders. We strengthened our Knowledge Management with Webinars, as well as local and international Summits; marketed and promoted the network through our website, monthly newsletters, and recruitment of new members; and, established partnership with, apart from UNDRR, other international organizations among our Japan and South Korea counterparts.

Our Webinars, Programs, and Knowledge Series events, all focusing and building on the four Priority Areas, included: Women Leaders in Building Disaster Resilience; Integrating Risk Management and Resilience in Business Organizations; Business Continuity; Building Resilience Index and Resilient Housing; the Insurance Summit; and, the Top Leaders Forum.

To date, we have 84 individual companies and 4 professional organizations as partner members. And they have re-energized the network. It is time to move forward in 2022. This year’s theme of HARMONIZING AND SYNERGIZING ACTIONS FOR RESILIENCE is very apt as we now act with a stronger network. Thankfully, we survived. Let us stay resilient. We will overcome, together.

(Ret.) VAdm. Alexander P. Pama

Consultant for Disaster Risk Resilience, SM Prime Holdings, Inc.
Co-Chair, ARISE-Philippines



Our mission, commitment, strategies, work themes, priority areas, and this year's theme of "HARMONIZING AND SYNERGIZING ACTIONS FOR RESILIENCE" have been set and are clear. 2021 was a very busy and fulfilling year for the Network. ARISE-Philippines embarked on some crucial organizational development initiatives aimed at streamlining processes and driving efficiency, among which was engaging Resilient.PH as its strategic Secretariat support.

It launched a Membership Survey, a quick assessment of member's insights and perspectives about their participation to ARISE initiatives in February 2021. An extensive database membership audit followed identifying several opportunities for the Network to further strengthen the Network. By second quarter, the Secretariat started engaging members on the different Work Theme and Priority Area leads and programs. One-on-one conversations with top leaders identified ARISE-Philippines' priorities and key programs prior to the 1st Board Meeting.

The 1st Board of Directors Meeting provided the venue for sharing the valuable priorities, insights, and recommendation of the top leaders in the one-on-one sessions. The 2021 Theme RE-ENERGIZING THE NETWORK was formally adopted by the Board and launched during the meeting. The Secretariat formally introduced three Work Themes and four Priority Areas to the Board. They then signed up in the different Work Themes and Priority Areas and shared how they can contribute to the themes and areas.

By the 2nd BOD meeting on 29 October 2021, with all members represented, the Secretariat had developed a more concrete program for membership engagement anchored on increasing communication with members, concretizing policies and procedures for membership, and developing programs to build stronger ties. The Board unanimously approved the Work Theme and Priority Area plans and programs. The Secretariat further strengthened the Network's communications through its website and its monthly BOD newsletters highlighting monthly accomplishments.

ARISE-Philippines lives up to its commitment through the initiatives on the three Work Themes – (1) Disaster Risk Management Strategies or DRMS; (2) Education and Training; and (3) Urban Reduction and Resilience – and the four Priority Areas on (1) Small and Medium Enterprises or SMEs; (2) Investors and Investments; (3) Insurance and Re-Insurance; and (4) Resilient Infrastructure. The Work Themes and Priority Areas Leads presented their plans and programs to the Board in its first meeting and in the Annual General Meeting, setting the stage for implementing them by the third quarter of 2021. The initiatives and programs per Work Theme and Priority Area are highlighted in this annual report.

As with our Board Chair, Hans T. Sy, and Board Member, Liza B. Silerio, I thank the ARISE-Philippines Secretariat, our Board members, and all our members for their passion and commitment in delivering our themes, then and now.

Atty. Alexander B. Cabrera

Chairman and Senior Partner, PwC Philippines
Vice Chair, ARISE-Philippines



Congratulations to ARISE-Philippines for another challenging but productive year. 2021 was another year of uncertainties. Yet, true to our DNA as Filipinos, we remain resilient. The pandemic did not diminish our passion to build a strong alliance for disaster resilience societies. It went beyond our own private sector space as we built good relationships with the Philippine government and the academe. They helped us fulfill our commitment to raise awareness, share knowledge and influence positive change.

Our two-pronged approach in 2021 — transforming by performing — made a huge contribution to our alliance's growth.

We transformed as we looked internally and re-energized our network. We strengthened our work themes and priority areas, as we gathered our members' ideas and sentiments. Our efforts to revitalize our website, amplify our marketing and promotion, and issue regular updates from the board are in line with our work themes and priority areas. These gave the needed boost to deliver our work. We transformed by engaging with numerous stakeholders, who are all equally important in achieving our objectives.

We transformed by engaging with numerous stakeholders, who are all equally important in achieving our objectives. This year, our work with IFC on Building Resilience Index is considerably groundbreaking. We joined Build Change during their online event for resilient housing. We spoke about resilience before the insurance industry at the First Virtual Philippines Insurance Summit.

We continue to strongly support Micro Small Medium Enterprise (MSME). With our active partners SM Prime, National Resilience Council (NRC) and Department of Trade and Industry (DTI), we mounted the Business Continuity webinars to provide MSMEs with advanced learning towards resilience and transformation. We engaged civil engineers in our efforts at the Philippine Institute of Civil Engineers webinar on Disaster Risk Management (DRM).

Our global ARISE representative Engr. Liza Silerio was instrumental in representing ARISE Philippines in engaging other ARISE networks some notable projects from it were the regular updates to the network, and a collaboration with Japan on raising awareness about tsunamis. We recognized outstanding programs by local government units as we partnered with the Galing Pook Awards. Our partnership with the National Resilience Council complements our need for a science-based approach in educating our stakeholders on different levels and phases of disasters.

Our Top Leaders Forum was an opportunity for multi-sectoral interaction when we hosted speakers from the government and education sectors and discussants from the private organizations. Enhancing private and public alliance helps ensure that disasters, including health crises like COVID-19, will not hinder private sector engagement.

These milestones, complemented by ARISE PH's contribution to disaster awareness cannot be underestimated. The contribution of the private sector in resources and time to push the advocacy is evidence of the sense of community within the ARISE network. In 2022, we continue to build a more resilient nation with a strong network that is driven to embark on the next phase, where goals and actions are aligned.

Liza B. Silerio

Vice President, Corporate Compliance Group,
SM Prime Holdings, Inc.
Board Member, ARISE Global



As a member country of ARISE Global and one of the most active nations in the ARISE Asia Pacific region, the Philippines is posed to create ripples in the disaster resilience movement. We have had to pivot time and again in the past two years and have had to adapt and adopt as quickly as the hazards would come. This had birthed in us, the private sector, a most intense instinct to work together for the survival of the nation.

The year 2021, due to continuing hazards from the COVID-19 pandemic, has expanded our responsibilities into the domain of health and wellness. The pandemic affected the Filipino population greatly in that the spread and rise of infected individuals could be attributed to the lack of awareness of health and safety protocols. It became a disaster risk and resilience concern because it took a toll on the people, economy as well as the environment. With the increase of infections, the government had no choice but to place restrictions which equated to an elevated alert in the hospital industry and a decrease in business operations for many. MSME's struggled during this period and needed much support in the fight to stay open amid the quarantine restrictions.

ARISE' 2021 theme of "Re-Energizing the Network" called the private sector to action and mobilize into public and private partnerships for information and awareness campaigns and on-ground programs for relief and rehabilitation, including assistance in testing and vaccinations. With our fullest gratitude to the ARISE Philippines Secretariat and its members, we have achieved organizational development, knowledge management and marketing and promotions to advocate DRR. We are proud that our international linkages have supported our various engagements. The summits, webinars and other knowledge sharing activities pooled regional resources. Notably, "Working Together Beyond Borders: A Webinar in Observance of the International Day for Disaster Risk Reduction" focused on cross-border strategies and initiatives in DRR. The Embassy of the Republic of Korea emphasized its long-term partnership with the Philippines for DRR in this virtual event.

Entering 2022, we unite and pursue "Harmonizing and Synergizing Actions for Resilience." The collaborations that have already begun will be the foundations for the enhancement of our DRR programs and initiatives. This prepares us towards our mission of creating resilient societies by energizing the private sector in collaboration with the public sector and other stakeholders to achieve the outcome and goal of the Sendai Framework in a transparent and inclusive way that delivers local and measurable impact.

Together, let us synergize and harmonize our programs and efforts towards our mission and commitments.

The 2021 ARISE-Philippines Annual Report “**Re-energizing the Network**” is the second official publication of the network’s activities and accomplishments.

In 2021 we took on the two-pronged approach: Transforming while Performing, as we re-energized the network and lived up to our commitments of raising awareness, sharing knowledge, catalyzing, influencing, and implementing through our Work Themes (Disaster Risk Management Strategies, Education and Training, Urban Risk Reduction and Resilience) and Priority Areas (Small and Medium Businesses, Investors and Investments, Insurance and Re-Insurance, and Resilient Infrastructure).

As our reference, 2020 was captured in our brief annual report. We embarked on a journey with a clear sense of direction. We started looking internally through the 2021 Members Survey and Member Database Audit.

About

ARISE-Philippines is a Local Network of ARISE (the Private Sector Alliance for Disaster Resilient Societies).

To date, the network has 88 private sector organizations as members that share the vision of a resilient, prosperous future where fewer lives are lost to disasters, capital assets and investments are risk-informed, and infrastructure is resilient to natural and man-made hazards.

The partnership between SM Prime Holdings, Inc. and UNDRR paved the path for the creation of ARISE-Philippines.

ARISE-Philippines Local Network was formally organized during the 2015 Top Leaders’ Forum wherein over 60 business partners of SM Prime committed to be part of ARISE-Philippines and were officially recognized as members. SM Prime took on the role of national secretariat for ARISE-Philippines Network.

Our Mission

To create resilient societies by energizing the private sector in collaboration with the public sector and other stakeholders to achieve the outcome and goal of the Sendai Framework in a transparent and inclusive way that delivers local and measurable impact.

REDUCE

DISASTER
MORTALITY BY 2030

NUMBER OF AFFECTED
PEOPLE BY 2030

ECONOMIC LOSS
BY 2030

INFRASTRUCTURE
DAMAGE BY 2030

SENDAI FRAMEWORK 7 GLOBAL TARGETS



EARLY WARNING SYSTEMS
AND DISASTER RISK
INFORMATION BY 2030

INTERNATIONAL
COOPERATION BY 2030

COUNTRIES WITH NATIONAL
AND LOCAL DISASTER RISK
REDUCTION STRATEGIES
BY 2020

INCREASE

P1

Understanding
the risk

P2

Strengthening
disaster risk
governance to
manage
disaster risk

P3

Investing in
disaster risk
reduction for
resilience

P4

Enhancing disaster
preparedness for
effective response
and to "Build Back
Better" in recovery,
rehabilitation and
reconstruction

SENDAI FRAMEWORK PRIORITIES FOR ACTION

Our Commitments

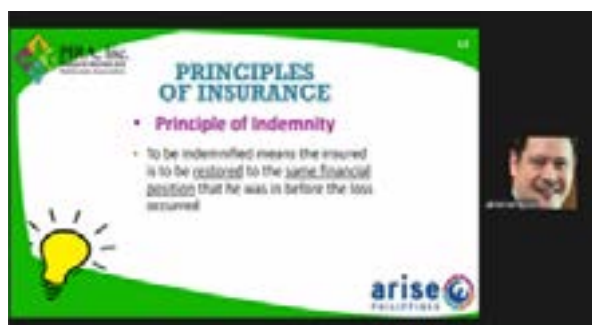
Raise Awareness

Awareness raising with respect to disaster risk and mobilization of the private sector



Share Knowledge

Share knowledge, experience and good practices amongst the private sector



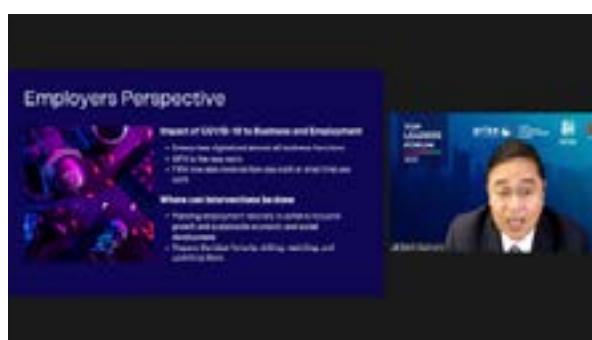
Influence

Exercising influence in respective spheres of expertise



Catalyze

Be a catalyst to generate innovation and collaboration in developing risk-informed business strategies



Implement

Implement projects and activities to achieve the targets of the Sendai Framework



Our Organization

ARISE-Philippines, while a network of volunteer organizations from the private sector, follows the organizational structure of ARISE Global. Leading the network by providing strategic directions and guidance is the Board of Directors (BOD).

Board of Directors



Hans T. Sy
Co-Chair



Alexander P. Pama
Co-Chair



Atty. Alexander B. Cabrera
Vice Chair



Dr. Ma. Teresita Medado
Treasurer

Members



Ma. Antonia Yulo-Loyzaga
National Resilience Council (NRC)



Rene Meily
Philippine Disaster
Resilience Foundation (PDRF)



Dr. Marqueza L. Reyes, EngD
Asian Institute
of Management (AIM)



Maribeth Marasigan
Aboitiz Foundation



Engr. Peter Paul Dy, Jr.
Philippine Institute of Civil
Engineers (PICE)



Raymond Rufino
NEO Property Management



Jose Edgardo Sunico
Unilever Philippines



ARISE-Philippines 2021

Strategic Direction

2021 was another year of challenges and opportunities for ARISE-Philippines. Usual delays in activities brought about by new lockdowns as the Omicron variant created another surge in cases in Metro Manila and other urban areas happened. Typhoon Rai (Odette) devastated the Visayas and Mindanao and many families are still struggling to rebuild as of this time.

Still, ARISE-Philippines was able to make strong headways in its efforts to re-energize the network. Programs for organizational development as well as many of the individual projects of the Work Themes and Priority Areas took off and the network was able to implement its two-pronged approach of TRANSFORMING and PERFORMING.

Transforming

ARISE-Philippines embarked on some crucial organizational development initiatives aimed at streamlining processes and driving efficiency, among which was engaging Resilient.PH as its strategic Secretariat support.

Under Co-Chair VAdm. Alexander P. Pama's leadership, ARISE-Philippines launched a Membership Survey, a quick assessment of member's insights and perspectives about their participation to ARISE initiatives in February 2021. An extensive database membership audit followed in June 2021 identifying several opportunities for the Network to further strengthen the Network.

By second quarter, the Secretariat started engaging members on the different Work Theme and Priority Area leads and programs. One-on-one conversations with top leaders identified ARISE-Philippines' priorities and key programs prior to the 1st Board Meeting.

The 1st Board of Directors Meeting on June 4, 2021 provided the venue for sharing the valuable priorities, insights and recommendation of the top leaders in the one-on-one sessions. The 2021 Theme RE-ENERGIZING THE NETWORK was formally adopted by the Board and launched during the meeting. The Secretariat formally introduced three Work Themes and four Priority Areas to the Board. They then signed up in the different Work Themes and Priority Areas and shared how they can contribute to the themes and areas.

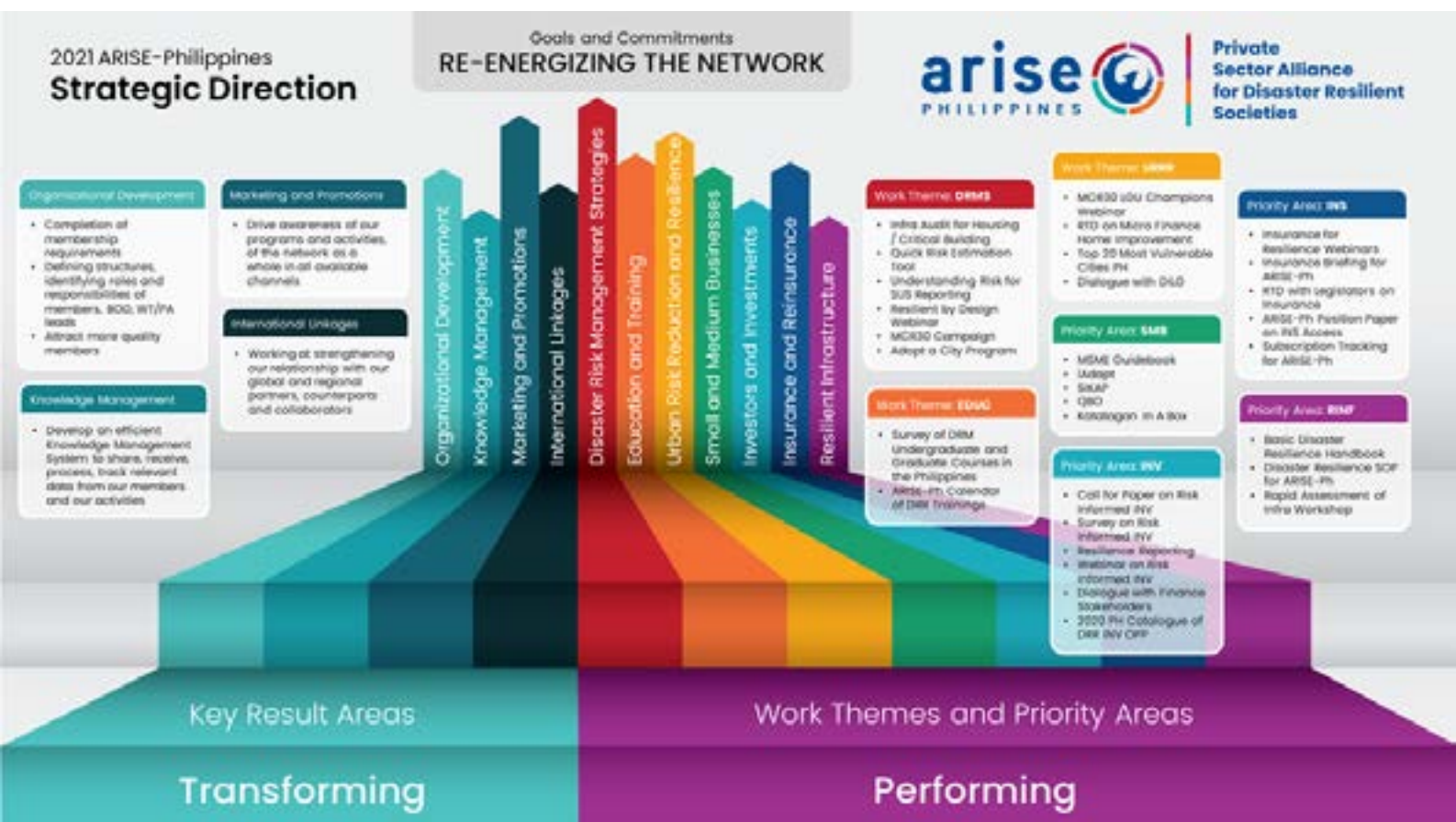
The Annual General Meeting followed the 1st Board meeting on June 18, 2021. The participants also witnessed the launching of the four-minute ARISE-Philippines official promotional video sponsored by SM Prime informing the general public on how the network contributes to building a Resilient Philippines.

By the 2nd BOD meeting on 29 October 2021 with all members represented, the Secretariat had developed a more concrete program for membership engagement anchored on increasing communication with members, concretizing policies and procedures for membership, and developing programs to build stronger ties.

The Board unanimously approved the Work Theme and Priority Area plans and programs. The Secretariat further strengthened the network's communications through its website and its monthly BOD newsletters highlighting monthly accomplishments.

Performing

ARISE-Philippines lives up to its commitment through the initiatives on the three Work Themes – (1) Disaster Risk Management Strategies or DRMS; (2) Education and Training; and (3) Urban Risk Reduction and Resilience – and the four Priority Areas on (1) Small and Medium Enterprises or SMEs; (2) Investors and Investments; (3) Insurance and Reinsurance; and (4) Resilient Infrastructure. The Work Themes and Priority Areas Leads presented their plans and programs to the Board in its first meeting and in the Annual General Meeting setting the stage for implementing them by the third quarter of 2021. The initiatives and programs per Work Theme and Priority Areas are highlighted in this annual report.



ARISE-Philippines 2021

Work Themes

ARISE-Philippines organized the Work Themes (WT) to help initialize Disaster Risk Reduction strategies and programs that could help in promoting resilience across communities through a perceived joint effort with the public sector and non-government organizations with recognition on the vital support of academic institutions.

This section will highlight all initiatives and programs launched and accomplished in 2021 either in collaboration with ARISE-Philippines, in partnership with other organization or those undertaken individually by the members as long as they contribute to the goals of building more resilient communities.

Work Theme 1 — Disaster Risk Management Strategies

LEAD: NATIONAL RESILIENCE COUNCIL

Ma. Antonia Yulo-Loyzaga
President



In celebration of the National Disaster Risk Day, the National Resilience Council launched their three-part Disaster Risk Management Strategies Knowledge Series with the following session: July 28, 2021 - Unpacking Hazard, Exposure, Vulnerability and Capacity; Aug. 5, 2021 - DRM Strategies, Tools and Methods; and Aug. 12, 2021 - Integrating Risk and Resilience into Sustainability Reporting.

The series brought together the private sector and government officials in a local forum on that provided a more extensive and deeper understanding of DRM.

The Quick Risk Estimation (QRE) Tool developed by the UNDRR promises to help Micro, Small and Medium Enterprise (MSMEs) ensure the continuity of their business operations by providing them with an easy to use app that allows them to assess their risks relative to COVID-19. Through the support of the National Resilience Council (NRC), the UP ISSI has successfully completed the Filipino translation of the QRE Tool. The localized version of the app is now accessible to our entrepreneurs, thus, making it easier to plan their operations amidst this evolving public health crisis. For more information about the QRE, please visit their site at <https://www.businessqre.net>.



Work Theme 2 — Education and Training

LEAD: MANILA OBSERVATORY

Fr. Jose Ramon Villarin, SJ
Executive Director

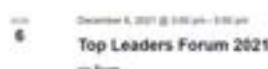
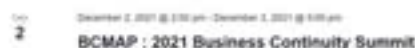


A concerted effort among members of WT2 (and other members of the network) is to reach out to all institutes of higher learning across the country to map out the various academic programs focused on resilience, disaster risk reduction or disaster risk management, and to promote these programs so as to form more leaders and managers who can lead the way in building a resilient world.

The main objective is to grow the number of academically trained disaster risk reduction/management professionals and, in the process, inspire more academic institutions to join ARISE-Philippines.

Another initiative launched by WT2 was the creation of a site that would solicit, calendar, and promote DRR-related trainings from all sources and channels; and to make them available both for members and non-members.

This will provide members access to knowing more about the emerging trends, practices, and technology on disaster risk management.



ARISE-Philippines 2021

Priority Areas

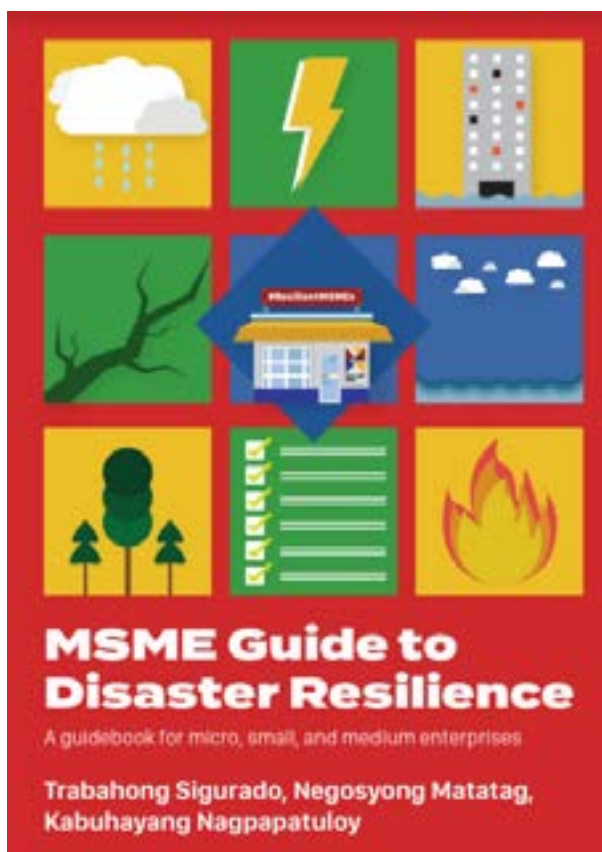
The Priority Areas (PA) will help in the fulfillment of the ARISE Global goals set on the basis of the Key Performance Indicators. Each PA contributes and organize members initiatives towards the target groups which includes the Small & Medium Enterprises, Investors and Investments, Insurance and Reinsurance, and Resilient Infrastructure that requires timely support and promotion.

This section will highlight all initiatives and programs launched and accomplished in 2021 either in collaboration with ARISE-Philippines, in partnership with other organization or undertaken individually by the members as long as they were addressed to the needs of the targeted groups which requires further assistance.

Priority Area 1 — Small & Medium Businesses

LEAD: PHILIPPINE DISASTER RESILIENCE FOUNDATION

Rene Meily
President



The MSME Guide to Disaster Resilience serves as a reference material for micro, small, and medium enterprises (MSMEs) to have an understanding of the basic concepts of disaster risk reduction and management, and business continuity practices. The guide also includes sample toolkits and exercises which can help MSMEs develop their own emergency preparedness and business continuity plans.

The guidebook is currently available for download on the SIKAP platform or on PDRF's [MSME Resilience Hub](#).



SIKAP stands for Synergizing Recovery Initiatives, Knowledge, and Adaptation Practices (SIKAP) for MSMEs. SIKAP is an MSME resilience program championing digitalization as support for MSMEs to pivot or re-establish their businesses affected by the COVID-19 pandemic. This was developed in partnership with the Connecting Business Initiative, UN OCHA, and UNDP.

On SIKAP you can access information on the latest business continuity and recovery tips, reference materials and other toolkits, and training opportunities and e-learning sessions provided by government agencies and private organizations. SIKAP also offers free mentorship sessions with key industry leaders on different topics and tracks such as digital transformation, supply chain management, and human resource management.



iADAPT stands for Innovations Academy for Disaster Awareness, Preparedness, and Training – the online academy for disaster resilience in the new normal. iADAPT is the eLearning solution that aims to equip Filipinos with the right set of tools, skills, and resources they need to be confidently ready to face any type of disaster.

Courses available focus on topics such as business and public service continuity planning, health resilience, COVID-19 guidelines, mental health and psycho-social support, and more! Learners can sign up for free to access the course catalog at <https://iadapt.pdrf.org/>



Katatagan-in-a-Box is a mobile app and a localized version of UPS' Resilience in a Box, which provides practical tips for enterprises to build their business continuity plans. The app is available on both the App Store for iOS and the Google Play Store for Android devices.



QBO ('ku-bo') is an innovation hub or a platform for the startup community to collaborate, develop talents, and grow. They provide startups with support and resources through events and capacity building programs as well as focused interventions designed to improve access to markets, knowledge, capital and talent. Created in 2016 through a partnership with IdeaSpace, J.P. Morgan, the Department of Science and Technology (DOST), and the Department of Trade and Industry (DTI), QBO has been an active player in creating a competitive ecosystem in the Philippines, fueled by its vision of Filipino startups changing the world.

For more information on QBO, visit their website at qbo.com.ph or follow their social media accounts at @QBOPhilippines.

Priority Area 2 — Investors and Investments

LEAD: ABOITIZ FOUNDATION

Maribeth Marasigan
President and Chief Operating Officer



ARISE Global is aggressively calling for stakeholders to incorporate disaster risk information in their decision-making process. This is part of the challenge of the Priority Area on Investors and Investments — getting baseline information about the current sentiment of business leaders and finance stakeholders on their appreciation of disaster risks especially as it relates to the overall risks that they need to manage.

It is a short survey among members and non-members designed to draw out their sentiments about incorporating disaster risk information in their investment decisions.

The key initiatives of the PA on Investment and Investors, under two of the five key commitments of ARISE-Philippines — raising awareness and sharing knowledge — is the public call for papers on disaster risk informed investments. It is an effort to draw academic/professional papers on the topic with the intent of having the best submission be presented in a public forum — material for the continuing promotion of disaster risk informed investments. The objective is to generate well-researched and developed academic/professional papers on disaster risk informed investments that can be used to raise awareness and share knowledge for the finance and investment sectors.

A vertical poster with a red background and a yellow bottom section. At the top, it features the 'arise PHILIPPINES' logo and the 'abotiz Foundation' logo. The title 'SURVEY' is in large orange letters. Below it is an image of a magnifying glass over a bar chart. The main title 'Disaster Risk Informed Investments' is in white. The text 'The objectives of the survey:' is followed by three numbered points. At the bottom left, it says 'Survey Link: https://forms.office.com/r/KqERz02qcE' and includes a QR code. At the bottom right, it says 'Support DRR Cause for Business Continuity'.

A vertical poster with a dark blue background and a yellow bottom section. At the top, it features the 'arise PHILIPPINES' logo and the 'abotiz Foundation' logo. The title 'CALL FOR PAPERS' is in large orange letters. Below it is an image of a city skyline. The main title 'MAINSTREAMING DISASTER RISK INFORMED INVESTMENTS' is in white. The text 'The committee will be accepting topics that cover, but not limited to, the following:' is followed by three numbered points. At the bottom left, it says 'Registration: https://forms.office.com/r/DvLmDSkWDM' and includes a QR code. At the bottom right, it says 'Join now!' and 'Great prizes awaits the researcher/s who will present the best paper. For more information you may email us at secretariat@arise.ph or wait for the scheduled orientation for the participants.'

Priority Area 3 — Insurance and Reinsurance

LEAD: PHILIPPINE INSURERS AND REINSURERS ASSOC.

Michael Rellosa
Executive Director



One of the Four Priorities of ARISE Global is the promotion of Insurance and Reinsurance as a tool for managing the impact of disasters. Many developed countries are able to bounce forward better because majority of their citizens are sufficient covered by a host of insurance products. In the Philippines, while we are frequented with a number of multiple natural hazards every year, the bigger percentage of the businesses suffer, especially MSMEs. PIRA has put together a short survey that aims to collect baseline data on business owner's sentiments about insurance.



PIRA organized a two-part webinar series on Insurance for Resilience last November 13 and 15, 2021. It was designed to equip SME owners with basic knowledge and necessities of risk management tools, as well as the introduction of parametric insurance products.

The webinar gave a wide range of insights on how a business owner can protect their investments to future uncertainties, such as the those caused by disasters, that could impede business continuity. It even highlighted the advantages of parametric products especially for locations frequently visited by calamities.

Priority Area 4 — Resilient Infrastructure

LEAD: PHILIPPINE INSTITUTE OF CIVIL ENGINEERS

Engr. Peter Paul Dy, Jr.
President



In celebration of the 2021 National Disaster Resilience Month, priority area lead on Resilient Infrastructure, the Philippine Institute of Civil Engineers (PICE), organized a webinar on Disaster Resilience last July 31.

The webinar drew the attention of the members of the PICE including aspiring engineers from engineering schools across the country. Among the topics covered were subjective risk, disaster risk reduction and management, the DOST's Hazard Hunter app, the government's resilience efforts in anticipation of the Big One, and a general overview of ARISE-Philippines and its efforts to drive resilient infrastructure through its collaboration with the International Finance Corporations' Building Resilience Index (BRI) project.

A big chunk of the national budget goes to road construction and maintenance as seen with the frequent repetitive projects on road improvements. Flooding, being a common phenomenon in a country such as the Philippines, is a big challenge to the built administration in order to ensure high-performing roads and pavements that meet the ever-growing needs of the traveling public.

For the same reason, the Philippine Institute of Civil Engineers organized a webinar on Sustainable Asphalt Solutions for Construction and Maintenance. The session provided techniques on way forward means of making pavement mix design to create roads that are cost-effective and last longer using design practices as recommended by the expert panelist to help build sustainable pavements.

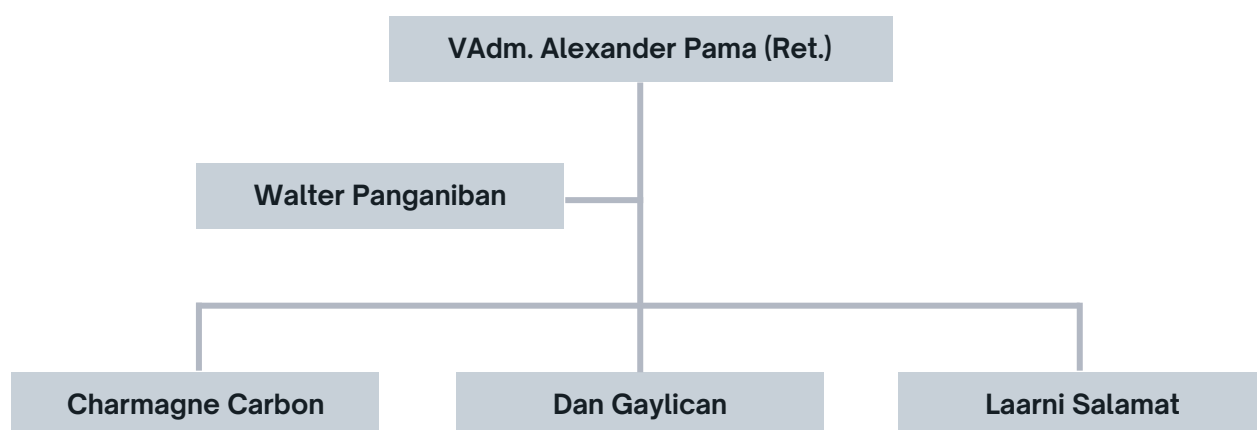


Organizational Transformation

With the theme “Re-energizing the Network”, 2021 became a very moving year for ARISE- Philippines. Some of the major changes adopted were:



Creation of the Secretariat Team



Strengthening Marketing and Awareness



2020 Annual Report



Social Media Platforms



2021 Year End AVP



ARISE-Philippines AVP



Website Development Activated

Strengthening Marketing and Awareness

Distribution of Monthly Newsletters



Re-energizing the Network – Engaging our Members

Members in the Network

as of December 2021

84

Individual
Companies

4

Professional
Organizations

Business Continuity Managers Association of the Philippines (6 industry partners)

Philippine Insurers and Reinsurers Association (58 company members)

Philippine Institute of Civil Engineers (11 member organizations / 8 chapters)

Philippine Federation of Professional Association (44 member organizations)

2Go Group, Inc.
1957 Security and Investigation Agency Corporation
Aboitiz Foundation, Inc.
Airspeed Group of Companies Holding. Corp.
All Around Services and Merchandising Corporation
Asia Pacific College
Asian Institute of Management Inc.
Belle Corporation
Build Change
Business Continuity Managers Association of the Philippines, Inc.
Cebu Classic Home Decors and Flowershop, Inc.
Cellprime Distribution
Cellstuff Cellphone Accessories
CEMEX Holdings Philippines
Center for Agriculture and Rural Development, Inc. (CARD)
CGC Personnel Alternatives Group Inc.
Chase Technologies Corporation
China Banking Corporation (China Bank)
Conrad Hotel Manila
Consolidated Explosives Group Corporation
Consolidated Prime Development Corporation
DDT Konstruct
De La Salle University Inc.
DHL Supply Chain Philippines, Inc.
DJA Security Services, Inc.
DLC Dental Health Studio, Inc.
Don Lee Builders Inc.
El Observatorio de Manila, Inc. (Manila Observatory)
Elemento 1412 Inc.
Empire East Land Holdings, Inc.
Family Entertainment Center, Inc.
GMA Network, Inc.
Hypervolt Contractor Corp
Job Clean Manpower and General Services Philippines, Inc.
Jollibee Foods Corporation
Jose Siao Ling & Associates
Kiu Global (Philippines), Inc.
LBC Express Inc.
Legend Janitorial & Manpower Services
Medicard Foundation, Inc.
Mindpro Incorporated
Mobile Technology
Mr. Speedy Philippines
National Resilience Council

National University Incorporated
Nauts & Vectors Company, Inc.
NEO Property Management Incorporated
Nestle Philippines
New Golden City Builders & Development Corporation
Oscar M. Lopez Center
Park Inn by Radisson - Davao
Park Inn by Radisson - Ilollo
Park Inn Radisson - North EDSA
Peridou, Inc.
Philippine Business for the Environment (PBE) - Business for Sustainable Development
Philippine Disaster Resilience Foundation
Philippine Federation of Professional Association
Philippine Institute of Civil Engineers, Inc.
Philippine Insurers and Reinsurers Association, Inc.
Philippine Spring Water Resources, Inc.
Premier Central Incorporated
Premier Southern Corp.
Prepper Plus
Pricewaterhouse Coopers Phils. (Isla Lipana & Co.)
Red Dot Design Inc.
RJC Corporate Security Services, Inc.
Royal Security Agency, Inc.
Sanford Marketing Corporation (Savemore Market)
Selective Security Services, Inc.
SM Arena Complex Corporation
SM Development Corporation (SMDC)
SM Hypermarket
SM Investments Corporation (SMIC)
SM Lifestyle, Inc.
SM Prime Holdings, Inc.
SM Retail, Inc.
SMX Convention Center Specialist Corp.
SouthernPoint Properties Corporation
Supervalue, Inc.
Tokyo Tempura
Uni-7th Force Security & Services, Inc.
Unilever Philippines, Inc.
University of Asia and the Pacific Foundation, Inc.
University of the Philippines Institute for Small Scale Industries
Vision M Visuals, Inc.
Wegen Distributed Energy Philippines Holdings Corporation
Willis Towers Watson Insurance Brokers Philippines, Inc.

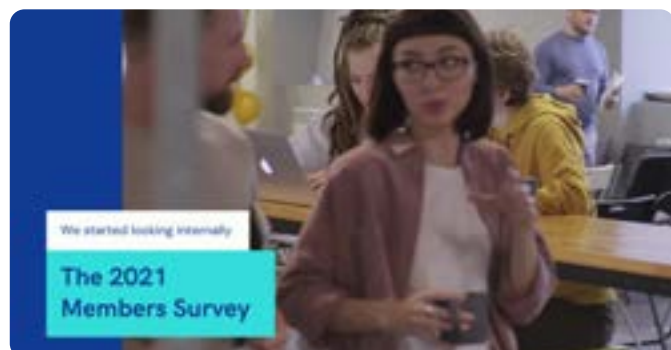
Members Engagement Activities

Member Survey and Engagement Audit

A survey to members was launched on 2021 as part of the process of setting-up new policies and structures to help the network move forward better in 2021 and in the years to come. The need to understand the sentiments and feedback from the members on past engagements was an important element of the survey to come up with effective membership engagement.

The secretariat also made an audit on the documentation and participation of the members to be able to ensure the line up of members and their status.

This led to the continuing coordination to the list of members for verification of contact details and official representations.



Onboarding Program

This is an orientation program wherein the members are briefed about the important details about ARISE-Philippines with emphasis on the commitments to the mandate of the Sendai Framework and the activities and programs undertaken by the network in its support.

There will be an emphasis on the different targets on risk reduction. This is in line with the enriched Membership Engagement program which is a product of the collaborative efforts of the network officers.

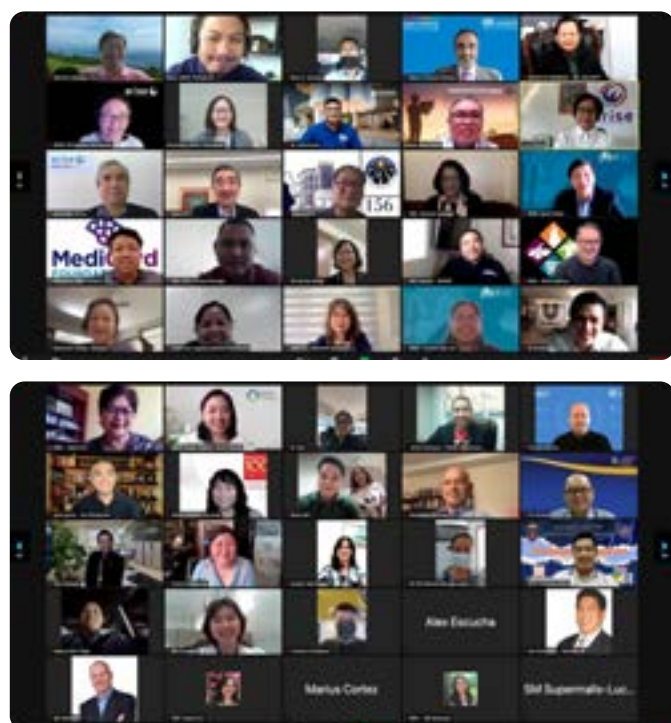


Members Engagement Activities

Annual General Assembly

Following its first Board of Directors Meeting, ARISE-Philippines held its Annual General Membership (AGM) Meeting last June 18, 2021 which saw over 70 representatives of the network's members come together for the first time this year.

In keeping with the theme "RE-ENERGIZING THE NETWORK", the AGM Meeting provided the members with the current status of the organization but more importantly, it was an avenue to share the network's 2021 Strategic Direction. UNDRR Regional Office for Asia and the Pacific, Mr. Marco Toscano-Rivalta, gave a special message highlighting the role of the ARISE network in helping achieve the targets of the Sendai Framework and he encouraged the members of ARISE-Philippines to share their voluntary commitments.



Special Events and Socials

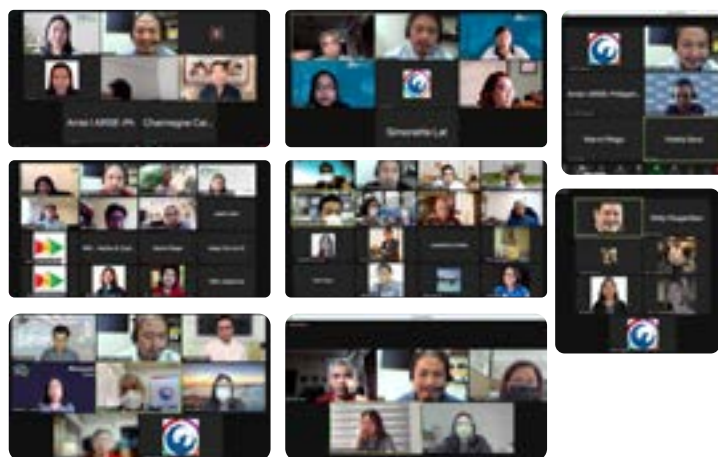
The 9th Top Leaders Forum (TLF) held on 6 December 2021, with the theme "Ensuring Continuity of Private Sector Engagement for Effective Disaster Risk Governance Given New Risks Due to the Pandemic, Impact of Climate Change and the Economic Outlook", focused on matters and issues relevant to the impacts of the ongoing pandemic, possible effects of climate change, and other factors to the country and society in particular the economy as it impinges on businesses and the sustainability of the private sector's efforts and activities in line with DRR and Resilience.



Board of Directors in Action

One-on-one with Board of Directors and Work Theme / Priority Area Leads

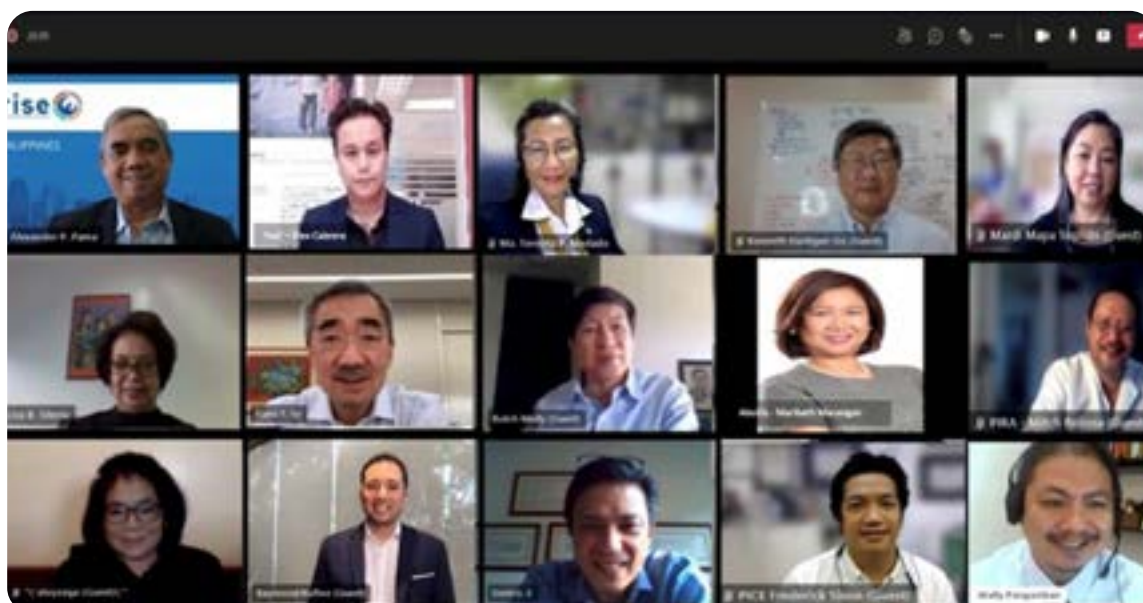
Riding on the momentum of the Annual General Membership Meeting (AGM), the Secretariat set up meetings with Work Theme (WT) and Priority Area (PA) leads to align on next steps relative to the activities and initiatives committed by the groups for 2021. The group met and was able to come-up with concrete next steps for their respective upcoming projects.



First Board of Directors Meeting

ARISE-Philippines held its first Board of Directors (BOD) meeting last June 4, 2021 following the network's theme for 2021 “RE-ENERGIZING THE NETWORK.” All members of the BOD were present, together with the respective leads of the Work Themes and Priority Areas. Also present was Ms. Liza Silerio, member of the ARISE Global board, who shared with the group the current updates of the global network.

The meeting was conducted to update the board of the network’s current status in terms of its membership, share accomplishments from last year, present current activities of the secretariat, and discuss proposed strategic and operational directions for 2021.



Board of Directors in Action

Second Board of Directors Meeting

By the 2nd BOD meeting on 29 October 2021, the Secretariat had developed a more concrete program for membership engagement anchored on increasing communication with members, concretizing policies and procedures for membership, and developing programs to build stronger ties. The Board unanimously approved the plan expected to materialize by the second quarter of 2022.



Co-Organized Events



In celebration of the National Women's Month, ARISE-Philippines, in collaboration with SM Cares and Resilient.PH, organized a two-hour online public forum highlighting women leaders in the field of disaster resilience. This was the first public event of ARISE-Philippines for 2021 and it brought together local and international women leaders who shared their insights and experiences in their respective disaster management roles. Designed to cover the four phases of disaster management (prevention, preparation, response, and recovery) the talks were centered on the role of women and women leaders in building resilience.

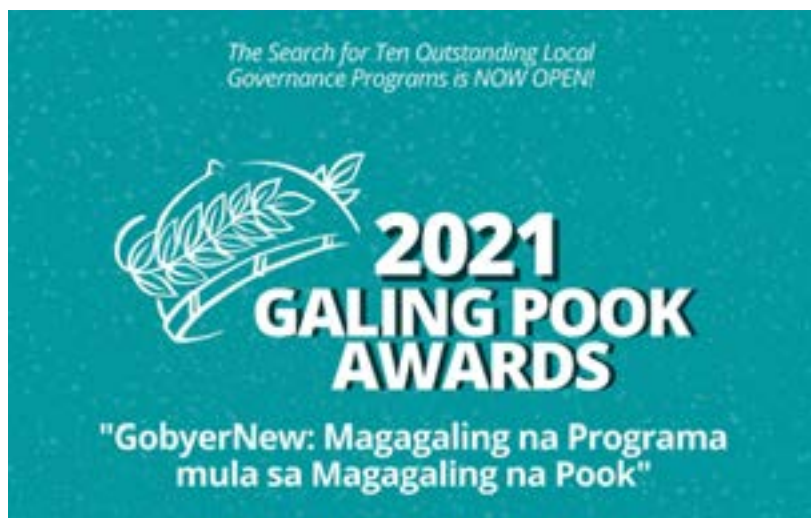


In solidarity with the United Nations Office for Disaster Risk Reduction (UNDRR) and all the other ARISE networks around the globe, ARISE-Philippines, together with SM and the Embassy of the Republic of Korea in the Philippines, organized a special webinar in observance of DRR Day 2021 — "WORKING TOGETHER BEYOND BORDERS." Focusing on Target F of the Sendai Framework for Disaster Risk Reduction, this year's DRR Day highlights the need to drive even more international cooperation to help developing countries, like the Philippines, reduce their disaster risks and build the resilience of their communities.



SM Supermalls and ARISE-Philippines, in partnership with the Office of the Civil Defense (OCD) and the National Disaster Risk Reduction and Management Council (NDRRMC), joined the 2021 First Quarter Online Nationwide Simultaneous Earthquake Drill. Held on March 11, 2021, on the Online Ceremonial Pressing of the Button for the First Quarter Nationwide Simultaneous Earthquake Drill.

Local Engagements



International Engagements

Asia Pacific Partnership for Disaster Risk Reduction Forum

The UNDRR Regional Office for Asia-Pacific (ROAP) convened on December 9 a forum on the Asia Pacific Partnership for DRR. The activity was organized to bring together representatives from various Governments and other stakeholders in the Asia-Pacific region to discuss and share experiences, lessons learned and ways forward relative to the Pandemic and other DRR and Resilience matters and issues. The presentations and discussions revolved around their "Reflections on how the region can take advantage of the opportunities created by COVID-19 recovery and the MTR-SF to further accelerate the implementation of the priorities on the Sendai Framework and ensure more inclusive Disaster Risk Reduction".

VAdm. Alexander Pama (Ret) read a joint statement for and in behalf of the ARISE networks in Asia (India, Japan and the Philippines) which was representing the private sector in ASIA during the online discussions. He highlighted that for ARISE-Philippines, we recognize the following opportunities to intensify the efforts to achieve the targets of the Sendai Framework which were anchored on its four priorities:

- Better Knowledge and Information Sharing
- Continuing Review/Assessment of Disaster Risk Reduction Policies, Programs and Strategies
- Set-up Incentives for Resilience Initiatives
- Continuing Dialogue with Public and Government Stakeholders to Co-Create the Resilience Agenda



ARISE Global AGM

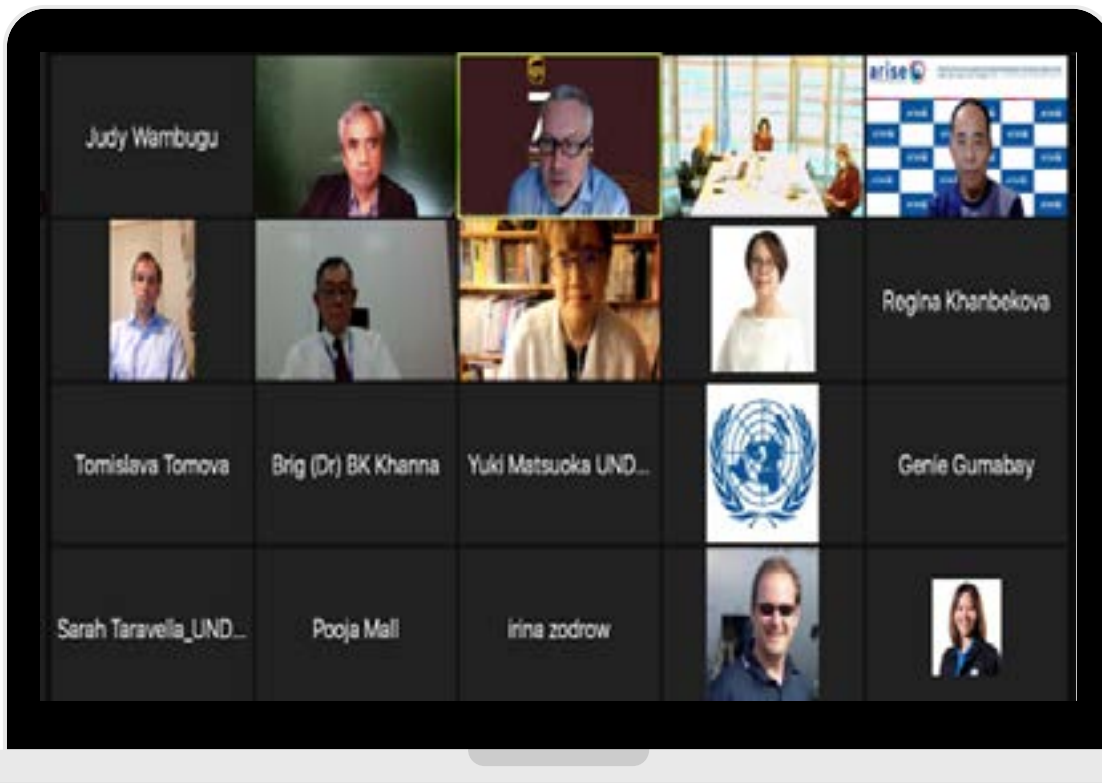
Our network had shown its active commitment in support of Disaster Risk Resilience mandate during the presentation of ARISE-Philippines Co-Chair, VAdm. Alexander Pama, during the ARISE Global AGM held on October 7, 2021. The presentation was well received by the audience as evidenced by the comments gathered, as well as during the online presentation and the meet-and-greet session.



Oscar M. Lopez Center (OMLC) and ARISE-Philippines joined the British Embassy in a engaging virtual round table discussion with UK MP of State for Energy, Clean Growth, and Climate Change Rt. Hon. Anne Marie Treveleyan who is also an international champion on Adaptation and Resilience for the Conference Of Parties (COP) 26. The virtual consultation meeting was organized in preparation for the COP26 this coming December hosted by Italy and the UK. The OMLC and ARISE-Philippines, together with other invited participants from the private sector, shared priorities on driving climate change adaption and building resilience.



International Engagements



Network Leaders Call

ARISE Network Leaders Call held 16th of November 2021 discussed on the finalization and implementation of the 2022-25 ARISE KPI's and the mobilization of the ARISE members to attend the Global Platform. Other agenda included the discussion on the Annual Report for 2021 and the preparations for the AGM on 2022.

2021 Milestones

Collaboration & Activities

ARISE-Philippines Knowledge Sharing Series with ARISE Japan

1st Session - 13 December 2021

ARISE Japan and ARISE-Philippines successfully hosted their inaugural Knowledge Sharing Session on 13 December 2021, focusing building the resilience of SMEs.

ARISE-Philippines described a new push to engage microfinancing groups to finance resilience-building in MSMEs outside such supply chains such as informal operators, filling a gap, and effectively demonstrated how collaboration between ARISE members build on each other's work for greater overall impact.

Inspired by the key commitment of ARISE on sharing knowledge, ARISE Japan and Philippines built a partnership that went beyond their respective Networks in pursuit of stronger and more strategic collaboration to attain the goals of the Sendai Framework in their respective countries. This unprecedented inter-Network collaboration is intended to leverage on learning from each other's good practices in DRR.



Japan Presentation by JCCI



Philippine Presentation by PDRF

2021 Milestones

Collaboration & Activities



Building Resilience Index

The International Finance Corporation, a member of the World Bank Group, together with ARISE-Philippines, SM Prime Holdings, Neo Property Management, Build Change, The Philippine Institute of Civil Engineers (PICE) and a number of other private and public organizations in the Philippines, launched the pilot run of the Building Resilience Index (BRI) initiative last May 11, 2021.

The BRI, a web-based software aimed at monitoring and boosting measures against calamities and disaster risks, involves hazard mapping, self-assessment of resilience measures and voluntary disclosures. The initiative will be first piloted in the Philippines then expanded to the Caribbean and Pacific Islands.

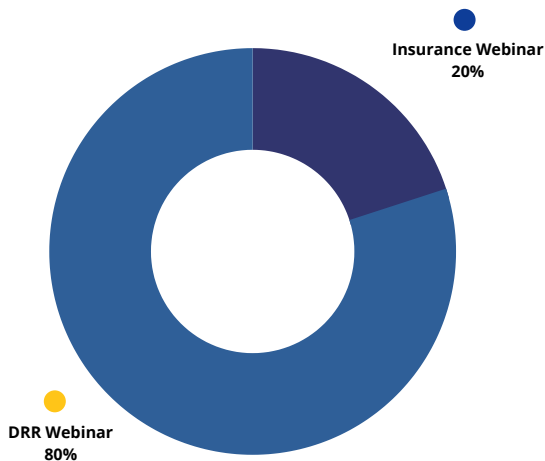
During said launch, ARISE-Philippines Co-Chair (Ret) VAdm. Alexander Pama gave the opening remarks which set the tone for the succeeding discussions specifically on the need to drive inclusion of risk and resilience information in investment and financial decisions as well as initiate the campaign to encourage private sector participation and adoption of the BRI.



Our Baseline KPI

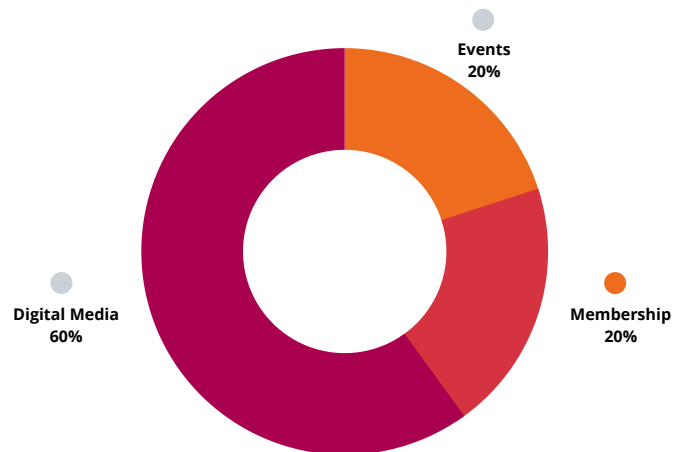
Education & Training

(Webinar/KSS/Training) 5 Initiatives



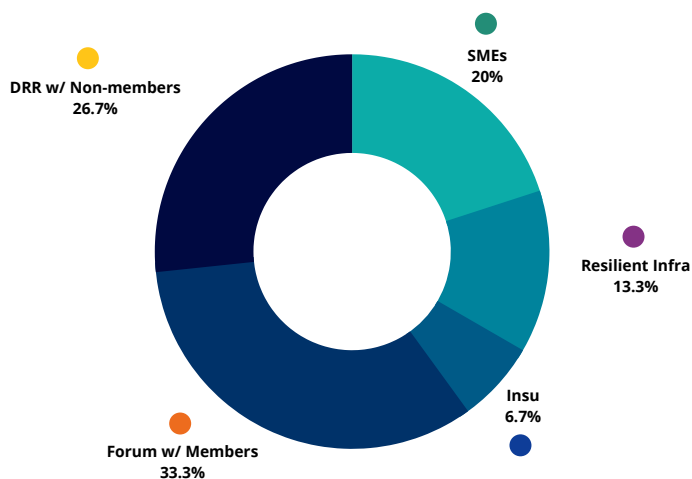
Awareness Campaign & Membership

5 Initiatives



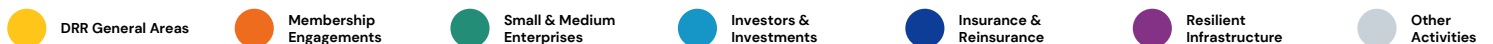
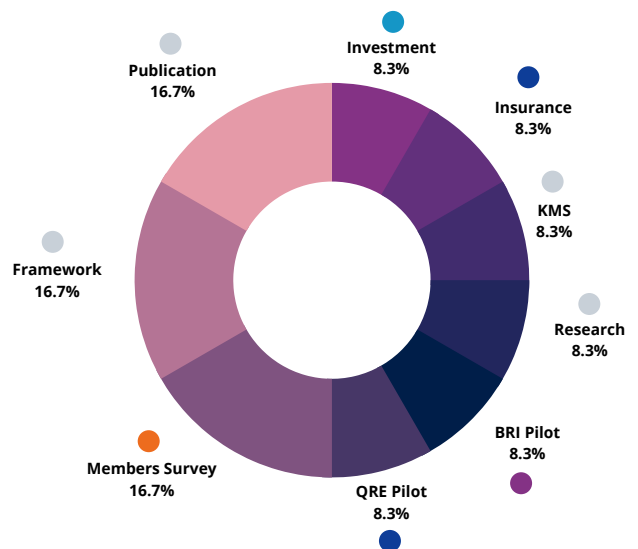
Collaborations

(Members and Other Institutions) 15 Initiatives



Publications and Pilots

12 Initiatives



arise
PHILIPPINES



**Private
Sector Alliance
for Disaster Resilient
Societies**

2022 Theme

Harmonizing and Synergizing Actions for Resilience

For inquiries and membership, contact:

ARISE-Philippines

The Secretariat

11/F Mall of Asia Arena Annex Building
Coral Way corner J.W. Diokno Boulevard,
Mall of Asia Complex, 1300 Pasay City, Philippines

Email Address : secretariat@arise.ph

Website : www.arise.ph



@UNDRRARISEPH



@ARISE_PH



ARISE-Philippines